



Morning Statement on the Start of the Polling Process RASSED Coalition for Monitoring Elections

20 / 9 / 2016

- A smooth start of the election process and a high level of readiness among the staff of the IEC
- Availability of necessary electoral materials in the majority of the polling stations across the Kingdom
- A heavy security presence in the perimeters of the polling centers

In its efforts to monitor the Parliamentary Elections of the 18th House of Representatives, RASSED is monitoring the elections throughout the election day with 5000 fixed observers in the polling stations and 250 mobile observers in addition to a team located in the Central Operations Room in Amman and a communication team comprising 90 researchers trained to collect observation data, and classify and audit them on the basis of a data collection form designed in advance.

The results of the analysis based on data received from the field observers indicated that 93% of polling stations opened at 7am sharp while others opened with a delay of 5.5%, with periods of time varying from 1 minute to 30 minutes. 1.5% of the polling stations opened between 3160- minutes late, for example, polling station number 28 in the 3rd district in Amman was 40 minutes late due to the late arrival of one of its committee members. As for the turn out of the voters at the beginning of the day, 55% of the polling stations were empty of voters at the time they opened. The number of ballots cast by 10:30AM was 269,000, approximately 7% of the total number of registered voters according to the the final voting lists.

Polling centers witnessed a heavy presence of security forces inside them and in their perimeters, with 92% of polling stations having witnessed the presence of security patrols and police officers. When the IEC was asked to clarify the presence of security forces inside the polling centers, they stated that the security plan requires the presence of 23- unarmed guards from the administrative section of the public security services in the polling centers to enforce the decisions of the Chairmen of the Committees when necessary. However, contrary to electoral instructions, RASSED's field observers reported that security officers were present inside the polling stations. This was reported to the IEC, which responded positively and circulated instructions that all security officers be present outside the polling stations (but may remain within the polling center). The security situation was stable in general, however some incidents



Morning Statement on the Start of the Polling Process RASSED Coalition for Monitoring Elections

were reported. For example, in Madaba district there was a shooting related to the electoral process and the IEC was contacted to take the necessary measures.

As for the readiness of the polling stations and the Polling and Counting Committees, the field observers reported that 3.9% of stations were not ready on time, with the Chairmen of Committees were not present in 0.2% of the polling stations and one or two members of the committee absent from 1.2% of the stations. Additionally, one or two assistants were absent in 1.4% of stations, and the data entry clerk was late to arrive in 1.1% of the polling stations.

Concerning the availability of electoral materials at the time of opening the polling stations, RASSED's field observers reported that 98.7% of the polling stations had all the electoral materials ready at opening time. There were remarks about some mistakes in the ballot booklets, with booklets reported that did not contain all the lists in the district, for example, at Al Fateh Secondary School for Boys in the Second District in Amman.

A number of observers reported that some polling stations opened without filling in the appropriate form, for example, polling station number 71 in Mafraq.

Morning Statement on the Start of the Polling Process

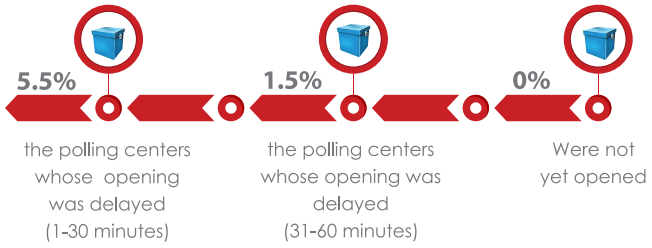
RASED Coalition for Monitoring Elections

Monitoring Results of the Opening Process of the Polling Stations

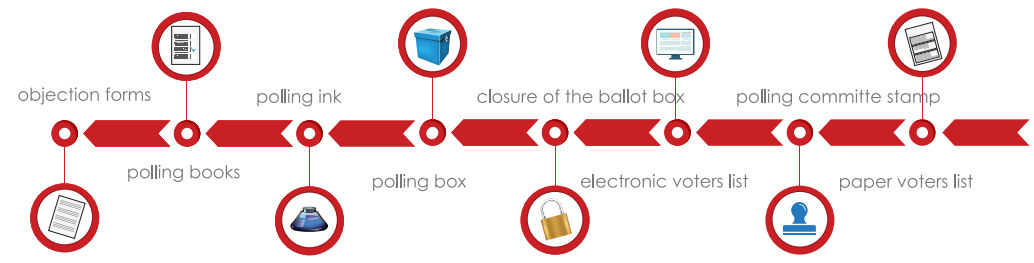
93% of polling stations opened on time (at exactly 7:00 a.m.)

45% of polling centers witnessed the presence of voters at their opening

92% of polling centers witnessed the presence of policemen within their perimeters



98.7% of polling stations had all polling material available at the time of opening of the polling center



99.8% of the polling stations didn't have the head of committee present when the polling center opened

96.1% of committee members were present (6 members) when the polling station opened

98.6% of the polling stations didn't have the second member of the committee present when the polling station opened

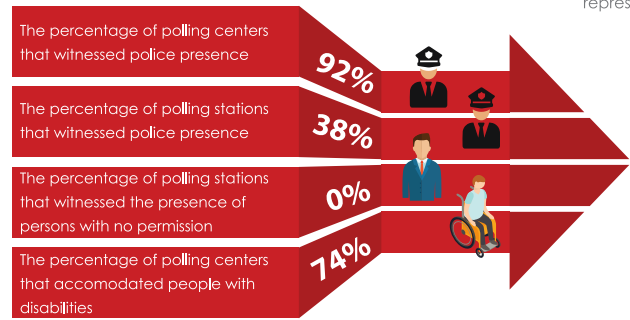
98.7% of the polling stations didn't have the first member of the committee present when the polling station opened

95.5% of the polling stations didn't have the first assistant present when the polling station opened

98.9% of the polling stations didn't have the data entry clerk present when the polling station opened

95.7% of the polling stations didn't have the second assistant present when the polling station opened

6% of polling centers denied entry to the polling stations to persons with badges from the IEC



98.3% of committees showed participants the empty ballot boxes before starting the process